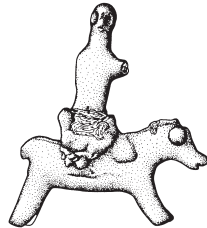


The Shrine of Eileithyia

Minoan Goddess of Childbirth and Motherhood
at the Inatos Cave in Southern Crete

Volume II

The Pottery and Figurines



PREHISTORY MONOGRAPHS 74

The Shrine of Eileithyia
Minoan Goddess of Childbirth and Motherhood
at the Inatos Cave in Southern Crete

Volume II
The Pottery and Figurines

Edited by

Philip P. Betancourt and Athanasia Kanta

With contributions by

Philip P. Betancourt, Diane E. Evitts, Susan C. Ferrence, Alessandra Giumlia-Mair,
Amie S. Gluckman, Florence S.C. Hsu, Leanna Kolonauski, James D. Muhly,
Massimo Perna, and Sydney R. Sarasin



Published by
INSTAP Academic Press
Philadelphia, Pennsylvania
2024

Editorial, Design, and Production
INSTAP Academic Press, Philadelphia, PA
Project Editors: Konstantinos Chalikias and Melissa Eaby
Page Layout and Design: Hilary Sperling
Cover Design: Molly Kaplan

Printing and Binding
Integrated Books International, Dulles, VA

INSTAP Academic Press, a part of the Institute for Aegean Prehistory (INSTAP), was established to publish projects relevant to the history of the Aegean world, in particular from the Paleolithic to the 8th century B.C. It is a scholarly nonprofit publisher specializing in high-quality publications of primary source material from archaeological excavations and surveys as well as individual studies dealing with material from the prehistoric periods—exemplified by its *Prehistory Monographs* series of volumes. INSTAP is committed to engaging a variety of audiences by disseminating knowledge through its scholarly publishing program, which produces award-winning monographs at reasonable prices that are both academically and popularly acclaimed.

The Shrine of Eileithyia, Minoan Goddess of Childbirth and Motherhood, at the Inatos Cave in Southern Crete
Volume I: *The Egyptian-Type Artifacts (Prehistory Monographs 69)*, Günther Hölbl, ISBN 9781931534345 (hardcover), ISBN 9781623034399 (pdf)
Volume II: *The Pottery and Figurines (Prehistory Monographs 74)*, Philip P. Betancourt and Athanasia Kanta, eds., ISBN 9781931534406 (hardcover), ISBN 9781623034450 (pdf)

Library of Congress Cataloging-in-Publication Data
(Revised for vol. II)

Names: Betancourt, Philip P., 1936- editor, author. | Kanta, Athanasia, editor.
Title: The shrine of Eileithyia, Minoan goddess of childbirth and motherhood, at the Inatos cave in southern Crete / edited by Philip P. Betancourt and Athanasia Kanta.
Description: Philadelphia : INSTAP Academic Press, 2022- | Series: Prehistory monographs ; 69 ; 74 | Includes bibliographical references and index. | Contents: volume I: the Egyptian-type artifacts ; volume II: the pottery and figurines | Summary: "These volumes present catalogs, discussion, and images of the artifacts found in 1962 during the excavation of a cave near Tsoutsouros (ancient Inatos), Crete, Greece. The cave was a sanctuary dedicated to the Minoan and Greek goddess Eileithyia. The artifacts are discussed by periods, from the Minoan to the Roman Imperial era."-- Provided by publisher.
Identifiers: LCCN 2021060756 (print) | LCCN 2021060757 (ebook) ; volume I: ISBN 9781931534345 (hardcover) | ISBN 9781623034399 (pdf) ; volume II: ISBN 9781931534406 (hardcover) | ISBN 9781623034450 (pdf)
Subjects: LCSH: Tsoutsouros (Greece)--Antiquities--Catalogs. | Eileithyia (Greek deity) | Eileithyia Cave (Tsoutsouros, Greece) | Art objects, Egyptian--Greece--Tsoutsouros--Catalogs. | Excavations (Archaeology)--Greece--Tsoutsouros--Catalogs.
Classification: LCC DF261.T86 H63 2022 (print) | LCC DF261.T86 (ebook) | DDC 939/.18--dc23/eng/20220105
LC record available at <https://lcn.loc.gov/2021060756>
LC ebook record available at <https://lcn.loc.gov/2021060757>

Front cover: artifacts from the Shrine of Eileithyia including clay Hellenistic to Early Roman female figurine and figurines of pregnant women. Photos Y. Papadakis-Ploumidis.
Back cover: artifacts from the Shrine of Eileithyia including miniature vessels, figurines, a Roman lamp, and a stirrup jar rhyton. Photos Y. Papadakis-Ploumidis.

Copyright © 2024
INSTAP Academic Press
Philadelphia, Pennsylvania
All rights reserved
Printed in the United States of America

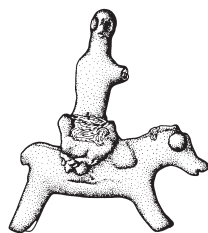
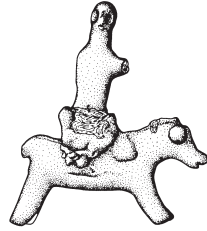


Table of Contents

List of Illustrations in the Text	vii
List of Figures	ix
List of Plates	xiii
Acknowledgments.....	xvii
List of Abbreviations.....	xix
1. Introduction to Volume II, <i>Philip P. Betancourt</i>	1
2. Ring-Shaped Pendant, <i>Philip P. Betancourt, Alessandra Giumlia-Mair, Susan C. Ferrence, and James D. Muhly</i>	5
3. Clay Plaque, <i>Philip P. Betancourt</i>	11
4. Minoan Pottery, <i>Philip P. Betancourt</i>	13
5. Miniature Minoan Vessels, <i>Philip P. Betancourt and Amie S. Gluckman</i>	27
6. Linear A Inscription, <i>Massimo Perna</i>	51
7. Subminoan to Roman Pottery, <i>Philip P. Betancourt</i>	53
8. Fragments of Vessels with Human Heads, <i>Philip P. Betancourt</i>	73
9. Minoan Clay Figurines, <i>Sydney R. Sarasin</i>	75
10. Minoan Copper Alloy Figurines before LM IIIB, <i>Sydney R. Sarasin</i>	81

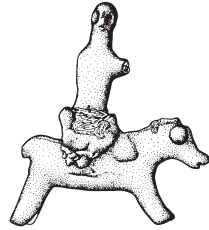
11. Minoan Lead Figurines, <i>Sydney R. Sarasin</i>	85
12. Figurines of the Goddess with Upraised Arms, <i>Sydney R. Sarasin</i>	87
13. Shrine Equipment for the Goddess with Upraised Arms, <i>Philip P. Betancourt</i>	95
14. Scenes of Parturition, <i>Leanna Kolonauski</i>	101
15. Embracing Couple Figurines, <i>Florence S.C. Hsu</i>	115
16. Miscellaneous Protogeometric to Early Archaic Figurines, <i>Philip P. Betancourt,</i> <i>Leanna Kolonauski, Sydney R. Sarasin, and Florence S.C. Hsu</i>	119
17. Daedalic Figurines, <i>Philip P. Betancourt</i>	131
18. Kourotrophi, <i>Leanna Kolonauski</i>	135
19. Standing Single Male Figurines, <i>Amie S. Gluckman</i>	139
20. Frieze of Warriors, <i>Philip P. Betancourt</i>	143
21. Boat Models, <i>Florence S.C. Hsu</i>	149
22. Hellenistic to Roman Figurine, <i>Diane E. Evitts</i>	153
23. Animal Figurines, <i>Philip P. Betancourt</i>	155
24. Hellenistic and Roman Lamps, <i>Philip P. Betancourt</i>	163
25. Discussion and Conclusions, <i>Philip P. Betancourt</i>	171
References	183
Index	199
Figures	
Plates	



List of Illustrations in the Text

Illustration 2.1.	Silver pendant from a tomb at Amnisos	6
Illustration 2.2.	Silver ring-shaped pendants from the tholos tomb at Livari Skiadi	7
Illustration 2.3.	Silvery ring-shaped pendants from the Petras cemetery: (a) PTSOU09-170; (b) PTSOU06-122	8
Illustration 9.1.	Head of a clay figurine with a conical hat from the Giamalakis Collection	76
Illustration 9.2.	Bronze man and centaur	76
Illustration 12.1.	Clay figurine of the Goddess with Upraised Arms from Gazi	88
Illustration 12.2.	Women with upraised arms riding “dragons” (a) clay sealing from Hagia Triada (CMS II.6, no. 33); (b) lentoid seal from Mycenae (CMS I, no. 167)	91
Illustration 12.3.	Clay figurine of a woman with upraised arms on a quadruped from Gavalomouri....	92
Illustration 12.4.	Clay Phi and Psi figurines from Mycenae.....	93
Illustration 14.1.	Geometric figurine from Hagia Triada	110
Illustration 14.2.	Geometric figurine with a hat from Hagia Triada.....	111
Illustration 14.3.	Geometric nude figurine from Hagia Triada.....	111

Illustration 14.4.	Archaic figurines (a, b) in preparation for childbirth from Cyprus	112
Illustration 16.1.	Archaic figurine from Hagia Triada.....	121
Illustration 16.2.	Archaic figurine from Gortyn.....	122
Illustration 20.1.	Frieze of warriors (a) West House at Akrotiri, Thera, LM IA; (b) Warrior Vase, found in a LH IIIC house at Mycenae; (c) Athenian Late Geometric amphora, Penn Museum 30-33-133.....	144
Illustration 24.1.	Clay moldmade heat shield for a Roman lamp (24.6) showing the cylindrical handle at the right and the scar from the missing lamp at the left.....	165



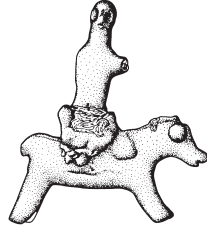
List of Figures

- Figure 1. Clay plaque with a superficial resemblance to a Cypriot plank-shaped figurine (3.1), EM IIB–III bridge-spouted jar (4.1), EM III–MM IA conical cup (4.3), MM IB goblets (4.4, 4.5), EM III–MM II closed vessel with bosses (4.6), MM IB–IIB conical cups (4.7, 4.12), MM I–III straight-sided cups (4.14–4.16, 4.18, 4.20), MM I–IIB tube-spouted jug or jar (4.21), MM IB–III closed vessels (4.22, 4.23), MM II–III cooking pots (4.24, 4.25).
- Figure 2. MM II–III cooking pot (4.27), MM II–LM I lamp (4.29), MM III–LM I cooking pots (4.33, 4.37, 4.39–4.41), MM III shallow conical cup with flat rim (4.42).
- Figure 3. MM III shallow conical cups with flat rims (4.43–4.50, 4.53, 4.54), MM III conical lamp or bowl with straight handle (4.56), MM III–LM IA in-and-out bowl (4.57), LM I firebox (4.58), LM I pithos (4.59).
- Figure 4. LM I–III pottery: bowl (4.60), conical cups (4.61, 4.62, 4.64, 4.65, 4.71, 4.75–4.77), braziers (4.79, 4.80).
- Figure 5. LM I–III pottery: jug (4.81), closed vessels (4.82–4.84). Miniature Minoan pottery: EM III–MM IA conical cups (5.1–5.4), EM III–MM II rounded cups (5.5–5.10), MM IB–II tumblers (5.11–5.16, 5.18, 5.20–5.23), MM IB–II carinated cups (5.24–5.27).
- Figure 6. Miniature Minoan pottery: MM IB–II carinated cups (5.28–5.30), MM I–III tray (5.31), MM I–III tripod vessels (5.32, 5.33), MM I–III bowls (5.34–5.42, 5.44–5.48), MM I–II conical cups (5.49–5.51, 5.53, 5.54, 5.56–5.60).
- Figure 7. Miniature Minoan pottery: MM I–II conical cups (5.62–5.70, 5.72–5.80, 5.82–5.84), MM I–III straight-sided cups (5.85–5.91).

- Figure 8. Miniature Minoan pottery: MM I–III straight-sided cups (5.92–5.100), MM I–II carinated cup with scalloped rim (5.101), MM I–III cylindrical cup (5.102), MM I–III braziers (5.103–5.105), MM II pinched lamp (5.106, 5.108), MM I–III lamps with straight handles (5.109–5.113).
- Figure 9. Miniature MM I–III pottery: lamps with straight handles (5.114, 5.115), offering stands (5.116–5.118), bird’s nest bowl (5.119), pithoi (5.120, 5.121), amphorae (5.122–5.124), jars (5.125–5.128), jugs (5.129–5.139).
- Figure 10. Miniature Minoan pottery: MM I–III jugs (5.140–5.142), MM I–III bridge-spouted jug with basket handle (5.143), MM I–III closed vessels (5.145–5.147), MM I–III tripod cooking pots (5.148, 5.149), MM IIB cuvette (5.150), MM IIB carinated jug (5.151), MM III shallow conical cups with outturned rims (5.152–5.154, 5.156–5.158).
- Figure 11. Miniature Minoan pottery: MM III shallow conical cup with flat outturned rim (5.159), LM I–III tray (5.160), LM I–III tripod bowl (5.161), LM I–III conical cups and bowls (5.162–5.165, 5.168–5.175), LM I–III cylindrical cup (5.176), LM I–III straight-sided cups (5.178, 5.179), offering stand (5.180), LM I–III braziers (5.181–5.183), LM I–III saucer lamp (5.184).
- Figure 12. Miniature LM I–III pottery: jars (5.186, 5.187), amphora (5.188), jugs (5.189–5.192), tripod cooking pots (5.193, 5.194), closed vessels (5.196, 5.197). Miniature Minoan vessels with Linear A and incised lines (6.1–6.3). Subminoan and later clay vessels: Subminoan stirrup jars (7.3, 7.4), Protogeometric B shallow bowl or tray (7.5), Protogeometric B skyphos (7.6), Protogeometric B miniature stirrup jar rhyton (7.7).
- Figure 13. Protogeometric to Geometric clay tripod offering stand (7.8), cup-sized bell kraters (7.9, 7.12, 7.13, 7.15–7.17).
- Figure 14. Protogeometric clay vessels: cup-shaped bell kraters (7.20–7.22), bell skyphoi (7.25–7.33).
- Figure 15. Protogeometric to Geometric clay vessels: bell skyphoi (7.34, 7.35), miscellaneous pedestal cups (7.36, 7.37, 7.39–7.46).
- Figure 16. Protogeometric to Archaic clay vessels: Geometric kalathoi (7.48–7.51), Protogeometric B to Early Geometric hemispherical cups (7.53, 7.54), Geometric lamp (7.55), Early Geometric juglet (7.56), Geometric to Archaic juglets (7.57, 7.58), Geometric ring vase (7.59), Late Geometric aryballos (7.60), Geometric lid (7.62), Archaic kalathos (7.63), Archaic juglet (7.65).
- Figure 17. Late Geometric to Archaic clay vessels: Archaic juglet (7.66), miniature pyxis (7.67), Archaic aryballoi (7.68–7.79), Archaic bird-shaped askos (7.80), Archaic jug with three handles (7.81), Archaic cup-sized bell krater (7.82), Early Archaic Creto-Cypriot juglets (7.83–7.86).
- Figure 18. Archaic to Roman clay vessels: Early Archaic Creto-Cypriot juglets (7.87, 7.89–7.91), Archaic lid (7.93), Classical to Hellenistic cup-sized krater (7.94), Classical kotyle (7.95), Hellenistic bell skyphos (7.96), Roman braziers (7.97, 7.98).
- Figure 19. Hellenistic to Roman clay vessels: Roman braziers (7.99, 7.100), Hellenistic to Roman lid (7.101), kalathos (7.102), Hellenistic to Roman closed vessel (7.103), Hellenistic to Roman jar (7.104), Roman Imperial amphorae Type AC 1 (7.105–7.106, 7.108, 7.109, 7.111).
- Figure 20. Roman Imperial amphora: Type AC 1 (7.112), Type Late Roman 1 (7.117). Heads removed from pottery (8.1–8.4).
- Figure 21. Minoan and later clay figurines (9.1–9.5).
- Figure 22. Minoan and later clay figurines (9.6–9.8, 9.10).

- Figure 23. Minoan lead figurines (**11.1–11.3**). Minoan clay figurines of the Goddess with Upraised Arms (**12.2–12.4**).
- Figure 24. Protogeometric to Geometric clay figurines of the Goddess with Upraised Arms (**12.5–12.8**).
- Figure 25. Geometric clay figurine of the Goddess with Upraised Arms (**12.9**).
- Figure 26. Minoan cylindrical stands of the snake tube class (**13.1–13.7**).
- Figure 27. Minoan kalathoi (**13.8–13.10**), Minoan clay plaque (**13.11**), Protogeometric to Geometric figurine pair in a kalathos depicting preparation for childbirth (**14.1**).
- Figure 28. Protogeometric to Geometric figurine pair seated on a kalathos fragment and single figures from pairs depicting preparation for childbirth (**14.2–14.5**).
- Figure 29. Protogeometric to Geometric single figures from pairs depicting preparation for childbirth (**14.6–14.9, 14.11**).
- Figure 30. Protogeometric to Geometric figurine pair seated in a kalathos and a pair seated on a fragment of a vessel depicting preparation for childbirth (**14.12, 14.13**).
- Figure 31. Protogeometric to Geometric figurine pair and single figures from pairs depicting preparation for childbirth (**14.16–14.19**).
- Figure 32. Protogeometric to Geometric figurine pair and single figures from pairs depicting preparation for childbirth (**14.21–14.26**).
- Figure 33. LM IIIC to Geometric figurines and fragments from figurine pairs depicting preparation for childbirth (**14.28, 14.29, 14.31, 14.32, 14.34, 14.35**).
- Figure 34. Protogeometric to Geometric single figures and fragments from pairs depicting preparation for childbirth (**14.36–14.42**).
- Figure 35. Protogeometric to Geometric single figures from pairs depicting preparation for childbirth (**14.43–14.48**).
- Figure 36. Protogeometric to Geometric single figures from pairs depicting preparation for childbirth (**14.49–14.55**).
- Figure 37. Protogeometric to Geometric embracing couples (**15.1–15.5**).
- Figure 38. Protogeometric to Geometric embracing couples (**15.6–15.9**).
- Figure 39. Miscellaneous Protogeometric to Archaic figurines: Archaic baby in a crib (**16.1**), Early Archaic woman (Baubo?) lifting her dress (**16.2**), Geometric to Archaic column with modeled head (**16.3**), Late Geometric to Archaic woman with short hair and ankle-length skirt (**16.4**), Archaic woman with hands touching in front of the body (**16.5**).
- Figure 40. Miscellaneous LM IIIC to Geometric figurines (**16.6–16.12**).
- Figure 41. Miscellaneous Protogeometric to Geometric figurines (**16.13, 16.15–16.22**).
- Figure 42. Miscellaneous LM IIIC to Geometric figurines (**16.24–16.30, 16.32–16.34**).
- Figure 43. Miscellaneous LM IIIC to Geometric figurines (**16.35, 16.36, 16.38–16.44**).
- Figure 44. Miscellaneous Protogeometric to Geometric figurines (**16.45–16.56**).
- Figure 45. Miscellaneous Protogeometric to Geometric figurines (**16.57, 16.58, 16.60–16.66, 16.68**).

- Figure 46. Miscellaneous Protogeometric to Geometric figurines (16.69, 16.70, 16.72–16.76) and vessel fragments with scars from figurines (16.78–16.80).
- Figure 47. Protogeometric to Geometric vessel fragments with scars from figurines (16.81–16.84, 16.86).
- Figure 48. Protogeometric to Geometric vessel fragments with scars from figurines (16.87–16.89).
- Figure 49. Protogeometric to Geometric vessel fragments with scars from figurines (16.90–16.94) and plinth with lower part of figurine (16.95).
- Figure 50. Clay Daedalic figurines (17.1–17.3, 17.5, 17.6, 17.8).
- Figure 51. Protogeometric to Archaic clay kourotrophoi (18.1–18.3) and LM I male figurines (19.1–19.4, 19.6).
- Figure 52. Sections of clay Archaic frieze with dancing or running warriors (20.1–20.3).
- Figure 53. Geometric clay boat model with attached figurines (21.1).
- Figure 54. Geometric clay boat models with attached figurines (21.2, 21.3) and Hellenistic to Early Roman female figurine head (22.1).
- Figure 55. Protogeometric B to Early Archaic clay cattle figurines (23.1, 23.2, 23.4).
- Figure 56. Clay Late Geometric to Early Archaic cattle figurines (23.5–23.7) and Hellenistic bull figurines (23.8–23.10).
- Figure 57. Geometric to Archaic clay horse figurines (23.12–23.16), a rectangular clay box with a snake coming out of it (23.18), and an unidentified Protogeometric to Geometric clay quadruped figurine (23.20).
- Figure 58. Clay unidentified Protogeometric to Geometric quadruped figurines (23.21–23.24) and Roman moldmade lamps (24.2–24.4).
- Figure 59. Roman moldmade clay lamps (24.5, 24.6, 24.9–24.15).
- Figure 60. Roman moldmade clay lamps (24.17–24.20, 24.22–24.30).
- Figure 61. Roman moldmade clay lamps (24.31–24.55).



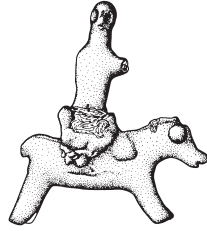
List of Plates

- Plate 1. EM I-IIA ring-shaped pendant from Inatos (2.1); MM I-II clay plaque (3.1).
- Plate 2. Minoan pottery: EM IIB-III bridge-spouted jar (4.1), EM IIB-III conical cup (4.2), EM III-MM IA conical cup (4.3), MM IB goblets (4.4, 4.5), EM III-MM II closed vessel with bosses (4.6), MM I-II conical cups (4.7-4.13), MM I-III straight-sided cups (4.14-4.18, 4.20), MM I-IIB tube-spouted jug or jar (4.21), MM IB-III closed vessels (4.22, 4.23).
- Plate 3. Minoan pottery: MM II-III cooking pots (4.24-4.28), MM II-LM I lamp (4.29), MM II-III brazier (4.30), MM III-LM I cooking pots (4.31-4.37, 4.39-4.41), MM III shallow conical cups with flat rims (4.42-4.44).
- Plate 4. Minoan pottery: MM III shallow conical cups with flat rims (4.45-4.54), MM III conical lamp or bowl with straight handle (4.56), MM III-LM IA in-and-out bowl (4.57), LM I firebox (4.58), LM I pithos (4.59), LM I-III bowl (4.60), LM I-III conical cups (4.61-4.70).
- Plate 5. Late Minoan I-III pottery: conical cups (4.71-4.77), braziers (4.78-4.80), jug (4.81), closed vessels (4.82-4.84).
- Plate 6. Miniature Minoan clay vessels: EM III-MM IA conical cups (5.1-5.4), EM III-MM II rounded cups (5.5-5.10), MM IB-II tumblers (5.11-5.18, 5.20-5.23), MM IB-IIB carinated cups (5.24-5.30), MM I-III tray (5.31), MM I-III tripod vessels (5.32, 5.33), MM I-III bowls (5.41-5.44).
- Plate 7. Miniature clay vessels: MM I-III bowls (5.45-5.48), MM I-II conical cups (5.49-5.62, 5.65-5.73, 5.75-5.84).

- Plate 8. Miniature MM I–III clay vessels: straight-sided cups (5.85–5.100), cylindrical cup (5.102), braziers (5.103–5.105), pinched lamps (5.107, 5.108), lamps with straight handles (5.109–5.113).
- Plate 9. Miniature MM I–III clay vessels: lamp with straight handle (5.114), offering stands (5.116–5.118), bird's nest bowl (5.119), pithoi (5.120, 5.121), amphorae (5.122–5.124), jars (5.125–5.128), jugs (5.129–5.142), bridge-spouted jug with basket handle (5.143), closed vessels (5.144–5.147), tripod cooking pots (5.148, 5.149).
- Plate 10. Miniature Minoan clay vessels: MM IIB cuvette (5.150), MM IIB carinated jug (5.151), MM III shallow conical cups with outturned rims (5.152–5.159), LM I–III tray (5.160), LM I–III conical cups and bowls (5.162–5.165, 5.167, 5.169–5.175), LM I–III straight-sided cup with side-spout (5.177), LM I–III straight-sided cups (5.178, 5.179), LM I–III offering stand (5.180).
- Plate 11. Miniature LM I–III clay vessels: brazier (5.181), saucer lamp (5.184), lamp with straight handle (5.185), jar (5.186), amphora (5.188), jugs (5.189–5.192), tripod cooking pots (5.193–5.195), closed vessel (5.196). Miniature Minoan vessels with Linear A and incised lines in the interior (6.1, 6.2), gold ring with Linear A inscription from Mavro Spelio (HM X-A530).
- Plate 12. Subminoan to Early Protogeometric bell skyphos (7.1), Subminoan to Protogeometric three-handled cup (7.2), Subminoan stirrup jars (7.3, 7.4), Protogeometric B skyphos (7.6), Protogeometric B miniature stirrup jar rhyton (7.7), Protogeometric to Geometric miniature tripod offering stand (7.8), Protogeometric to Geometric cup-sized bell kraters (7.10–7.15, 7.18, 7.19).
- Plate 13. Protogeometric to Geometric clay vessels: cup-sized bell kraters (7.20–7.22), bell skyphoi (7.23–7.29, 7.32, 7.33), miscellaneous bell skyphoi and other pedestal cups (7.35–7.39).
- Plate 14. Protogeometric to Geometric miscellaneous pedestal cups (7.40–7.44, 7.46), Protogeometric kantharos (7.47), Geometric kalathoi (7.48, 7.49, 7.52), Protogeometric B to Early Geometric hemispherical cups (7.53, 7.54), Early Geometric juglet (7.56), Geometric to Archaic juglet (7.57), Geometric ring vase (7.59), Late Geometric aryballoi (7.60, 7.61), Archaic incised one-handled cup (7.64), Archaic juglet (7.65).
- Plate 15. Archaic aryballoi (7.68, 7.69, 7.72–7.74), Corinthian Archaic aryballoi (7.76, 7.77), Archaic bird-shaped askos (7.80), Archaic jug with three handles (7.81), Archaic cup-sized bell krater (7.82), Early Archaic Creto-Cypriot juglets (7.83–7.88), Archaic lekythos (7.92), Archaic lid (7.93), Hellenistic bell skyphos (7.96), Roman braziers (7.97, 7.98).
- Plate 16. Roman Imperial amphorae: Type AC 1 (7.105–7.111), Type AC1e (7.113–7.115), Type AC3 (7.116), Type Late Roman 1 (7.117).
- Plate 17. Heads removed from pottery (8.1–8.4). Minoan clay figurines (9.1–9.6).
- Plate 18. Minoan clay figurines (9.7–9.10), Minoan copper alloy figurines (10.1, 10.2).
- Plate 19. Minoan copper alloy figurines (10.1, 10.2).
- Plate 20. Minoan lead figurines (11.1–11.3), Minoan bronze figurine (12.1), and LM IIIB–Subminoan clay figurines of the Goddess with Upraised Arms (12.2–12.4).
- Plate 21. Protogeometric to Geometric clay figurines of the Goddess with Upraised Arms (12.5–12.7).
- Plate 22. Geometric clay figurine of the Goddess with Upraised Arms riding a horse or donkey, back view (12.8).
- Plate 23. Geometric clay figurine of the Goddess with Upraised Arms riding a horse or donkey, front view (12.8).
- Plate 24. Geometric seated figurine of the Goddess with Upraised Arms (12.9).

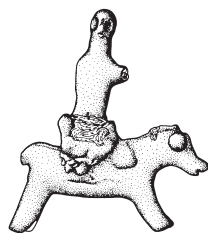
- Plate 25. Minoan cylindrical stands of the snake tube class (13.1–13.7).
- Plate 26. Minoan kalathoi (13.8–13.10), Minoan clay plaque (13.11).
- Plate 27. Protogeometric to Geometric figurine pair depicting preparation for childbirth: pregnant woman and midwife or goddess (14.1). Workshop method A.
- Plate 28. Protogeometric to Geometric figurine pairs and single figures depicting preparation for childbirth (14.2–14.4). Workshop method A.
- Plate 29. LM IIIC to Geometric figurines from pairs depicting preparation for childbirth (14.5–14.10). Workshop Methods B (14.5, 14.6) and C (14.7–14.9).
- Plate 30. Protogeometric to Geometric figurine pair seated inside a kalathos depicting preparation for childbirth (14.12).
- Plate 31. Protogeometric to Geometric figurine pairs and single figure depicting preparation for childbirth (14.13–14.17).
- Plate 32. Protogeometric to Geometric single figures depicting preparation for childbirth (14.18–14.20).
- Plate 33. Protogeometric to Geometric figurine pair and single figures depicting preparation for childbirth (14.21–14.23).
- Plate 34. LM IIIC single figures depicting preparation for childbirth (14.24–14.35).
- Plate 35. Protogeometric to Geometric single figures depicting preparation for childbirth (14.36–14.44).
- Plate 36. Protogeometric to Geometric single figures depicting preparation for childbirth (14.45, 14.46, 14.48–14.51, 14.53–14.55).
- Plate 37. Protogeometric to Geometric embracing couples (15.1–15.5).
- Plate 38. Protogeometric to Geometric embracing couples (15.6–15.8).
- Plate 39. Archaic figurine of a baby in a crib (16.1).
- Plate 40. Miscellaneous Protogeometric to Archaic figurines: Early Archaic woman (Baubo?) lifting her skirt (16.2), Geometric to Archaic column with modeled head (16.3), Late Geometric to Archaic woman with short hair and ankle-length skirt (16.4).
- Plate 41. Miscellaneous figurines: Archaic woman with hands together in front of the body (16.5).
- Plate 42. Miscellaneous LM IIIC to Geometric figurines (16.6–16.14).
- Plate 43. Miscellaneous Protogeometric to Geometric figurines (16.15–16.32).
- Plate 44. Miscellaneous LM IIIC to Geometric figurines (16.33–16.52).
- Plate 45. Miscellaneous Protogeometric to Geometric figurines (16.53–16.68).
- Plate 46. Miscellaneous Protogeometric to Geometric figurines (16.69–16.76).
- Plate 47. Miscellaneous Protogeometric to Geometric vessel fragments with scars from figurines (16.77, 16.78, 16.80–16.82, 16.84–16.87).
- Plate 48. Miscellaneous Protogeometric to Geometric vessel fragments with scars from figurines (16.88–16.94) and a plinth with a figurine (16.95).
- Plate 49. Clay Daedalic figurines (17.1–17.4).
- Plate 50. Clay Daedalic figurines (17.5–17.9).

- Plate 51. Protogeometric to Archaic clay kourotrophoi figurines (18.1–18.4).
- Plate 52. Late Minoan I clay male figurines (19.1–19.5).
- Plate 53. Clay male figurine (19.6).
- Plate 54. Parts of Archaic clay dancing or running warrior figurines (20.1–20.3).
- Plate 55. Geometric clay boat model with attached figurines (21.1).
- Plate 56. Geometric clay boat models with attached figurines (21.1–21.3).
- Plate 57. Hellenistic to Early Roman clay female figurine head (22.1) and Protogeometric B to Early Archaic clay bull figurines (23.1, 23.2).
- Plate 58. Protogeometric B to Early Archaic clay cattle figurines (23.3–23.5).
- Plate 59. Protogeometric B to Early Archaic clay cattle figurines (23.6, 23.7) and Hellenistic clay bull figurines (23.8–23.10).
- Plate 60. Lead bull or cow head (23.11), Geometric to Archaic clay horse figurines (23.12–23.16), and Protogeometric to Geometric clay goat figurine (23.17).
- Plate 61. Geometric to Archaic clay snake figurines (23.18, 23.19) and unidentified Protogeometric to Geometric clay quadruped figurines (23.20–23.24).
- Plate 62. Clay moldmade Roman lamps (24.1–24.8).
- Plate 63. Clay moldmade Roman lamps (24.9–24.17).
- Plate 64. Clay moldmade Roman lamps (24.18–24.26).



Acknowledgments

Many people helped with the preparation of this volume. The first editor is thankful to Costis Davaras and Athanasia Kanta for the invitation to assemble a team and study this important group of objects, and to Stella Mandalaki, Georgia Flouda, and Irimi Galli for great assistance at the Archaeological Museum in Herakleion where most of the artifacts were studied in preparation for the publication. In addition to work in this museum, research on other clay objects was carried out at the INSTAP Study Center for East Crete, directed by Thomas Brogan. The staff at the study center was also extremely helpful. Drawings and photographs were made by Douglas Faulmann and Chronis Papanikolopoulos to augment those available from the museum, by Yannis Papadakis-Ploumidis. The study was conducted under a permit issued by the Greek Ministry of Culture arranged through the American School of Classical Studies at Athens. The work was funded by Temple University, the Institute for Aegean Prehistory, and private donors. We are especially grateful to the anonymous peer reviewers of the manuscript for their suggestions and insights and for the hard work of the staff at INSTAP Academic Press during editing and production in preparation for publication.



List of Abbreviations

cm	centimeter(s)
d.	diameter
dim.	dimension
EM	Early Minoan
FN	Final Neolithic
HM	Herakleion Archaeological Museum, Herakleion, Crete, Greece
HM P	Herakleion Archaeological Museum pottery catalog number
HM X-A	Herakleion Archaeological Museum χρυσός και αργυρός (gold and silver) objects catalog number
ht.	height
INA	Inatos accession number
km	kilometer(s)
LH	Late Helladic
LM	Late Minoan
m	meter(s)
max.	maximum
mm	millimeter(s)
MM	Middle Minoan
Penn Museum	University of Pennsylvania Museum of Archaeology and Anthropology, Philadelphia, PA, USA
PG	Protogeometric
pres.	preserved
rest.	restored
w.	width
XRF	X-ray fluorescence spectroscopy

